

# PRODUCT INFORMATION PACKET

Model No: 5KCR49SN3009

Catalog No: C475

1-1/3 HP 2 speed Fan and Blower HVAC/R Motor, 1 phase, 1800/1800 RPM, 115 V, 56 Frame, ODP  
Self Cooled Motors



Regal and Marathon are trademarks of Regal Beloit Corporation or one of its affiliated companies.  
©2020 Regal Beloit Corporation, All Rights Reserved. MC017097E

REGAL



**Nameplate Specifications**

Output HP	1-1/3 Hp	Output KW	0.75 kW
Frequency	60 Hz	Voltage	115 V
Current	10.8,7.4 A	Speed	1725/1140 rpm
Service Factor	1.15	Phase	1
Efficiency	70 %	Power Factor	0
Duty	Continuous	Insulation Class	B
KVA Code	J	Frame	56
Enclosure	Drip Proof	Thermal Protection	N/R
Ambient Temperature	40 °C	Drive End Bearing Size	6203
Opp Drive End Bearing Size	6203	UL	Recognized
CSA	Yes	CE	N

**Technical Specifications**

Electrical Type	Capacitor Start Capacitor Run	Starting Method	SM
Poles	4	Rotation	Counterclockwise/Clockwise
Mounting	Resilient Base	Motor Orientation	ANY
Drive End Bearing	BALL	Opp Drive End Bearing	Ball
Frame Material	Rolled Steel	Overall Length	12.01 in
Frame Length	7.68 in	Shaft Diameter	0.630 in
Shaft Extension	1.88 in	Thru-bolts Extension	0 in
Connection Drawing	52A106478AA	Outline Drawing	52A109607P3

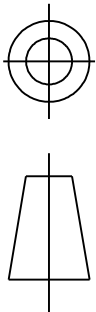
This is an uncontrolled document once printed or downloaded and is subject to change without notice. Date Created:03/11/2020



REVISIONS

REV.	DESCRIPTION	DATE	APPROVED
6	ADDED PT#6 PER DS11-1413 REDESIGN	06/15/2011	BHASKAR

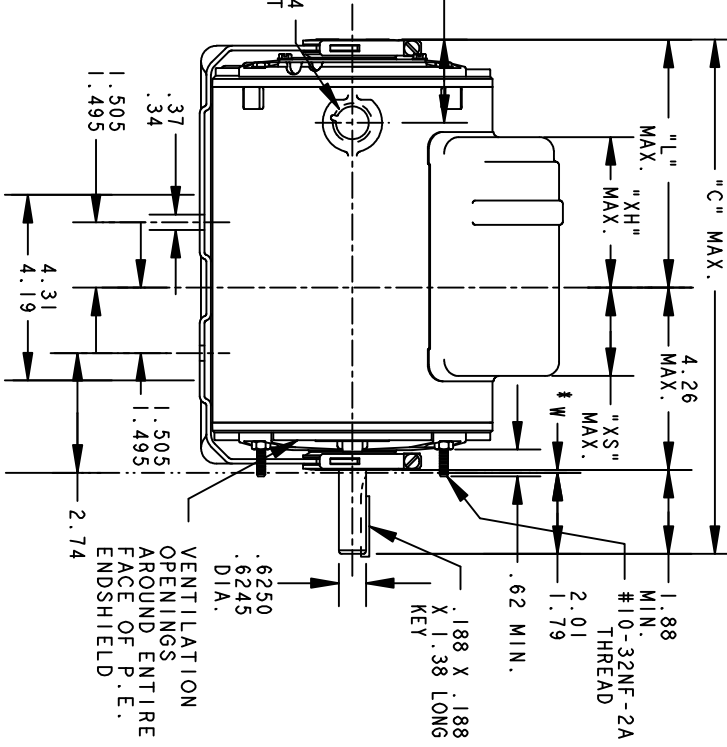
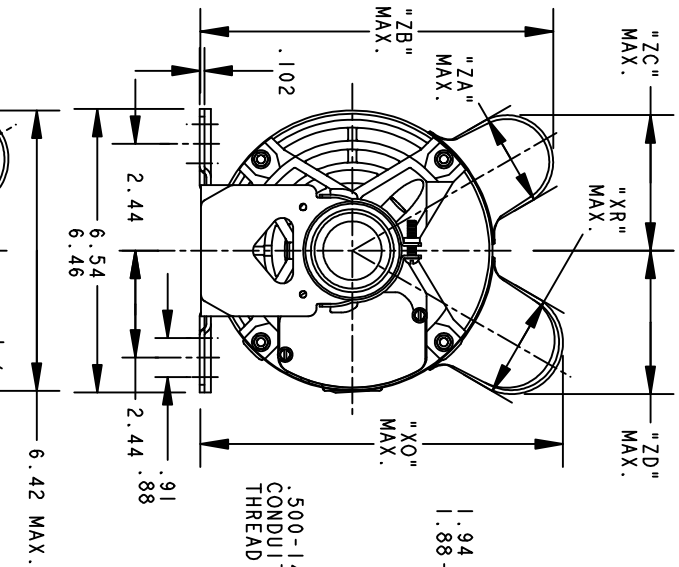
THIRD ANGLE PROJECTION



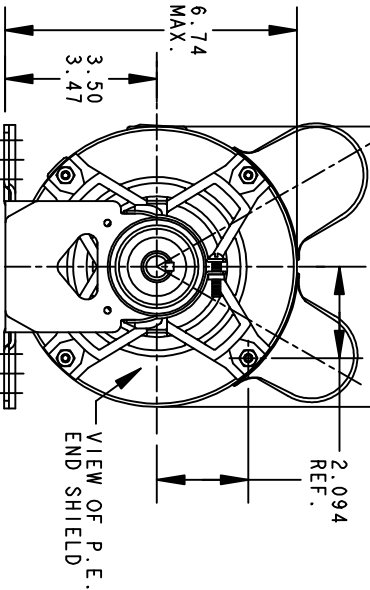
SHEET 1

52A109607

DRAWING NO. A



\*W IS A VARIABLE CLEARANCE DUE TO VARIATIONS IN PARTS AND ASSEMBLY



6	KCR	49	56	12.01	6.75	3.62	8.16	2.10	2.30	2.10	8.16	3.15	3.15	7.68
5	KCR	48	56	12.54	6.50	4.37	7.92	1.60	2.39	2.10	8.16	3.15	3.16	8.43
4	KC	46	56	10.78	4.62	2.92	7.81	1.60	2.82	2.15	8.18	3.20	2.89	6.55
3	KCR	49	56	12.01	5.75	3.62	7.74	1.60	2.30	2.10	8.16	3.15	2.80	7.68
2	KCR	49	56	11.48	5.22	3.48	8.16	2.40	2.26	2.10	8.16	3.15	3.30	7.15
1	KCR	49	56	11.48	5.22	3.48	7.56	1.60	2.26	2.10	8.16	3.15	3.09	7.15
P	TYPE	GE	NEMA	"C"	"L"	"XH"	"XO"	"XR"	"XS"	"ZA"	"ZB"	"ZC"	"ZD"	MIN. SHELL

SIGNATURES	DATE
MODEL MA MARKS	04/06/94
DETAIL	
CHECKED	
ENGRG	
MFG	
QUALITY	
ISSUED	M.D. PAPE 02/11/00

**REGAL-BELOIT CORPORATION**

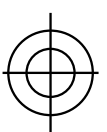
**OUTLINE**

**40 FRAME REDESIGN - GENERAL PURPOSE MOTOR - DRIP PROOF - BALL BEARING - RESILIENT BASE FWF: SKCR49PN3012X**

SCALE: 0.250 REF. No. .

FOR ADDITIONAL INFO REFER TO:
APPLIED DIMENSIONS ARE IN INCHES
MATERIAL
SOLID MODEL: 52A109607

TITLE	SIZE	DRAWING	REV
A			

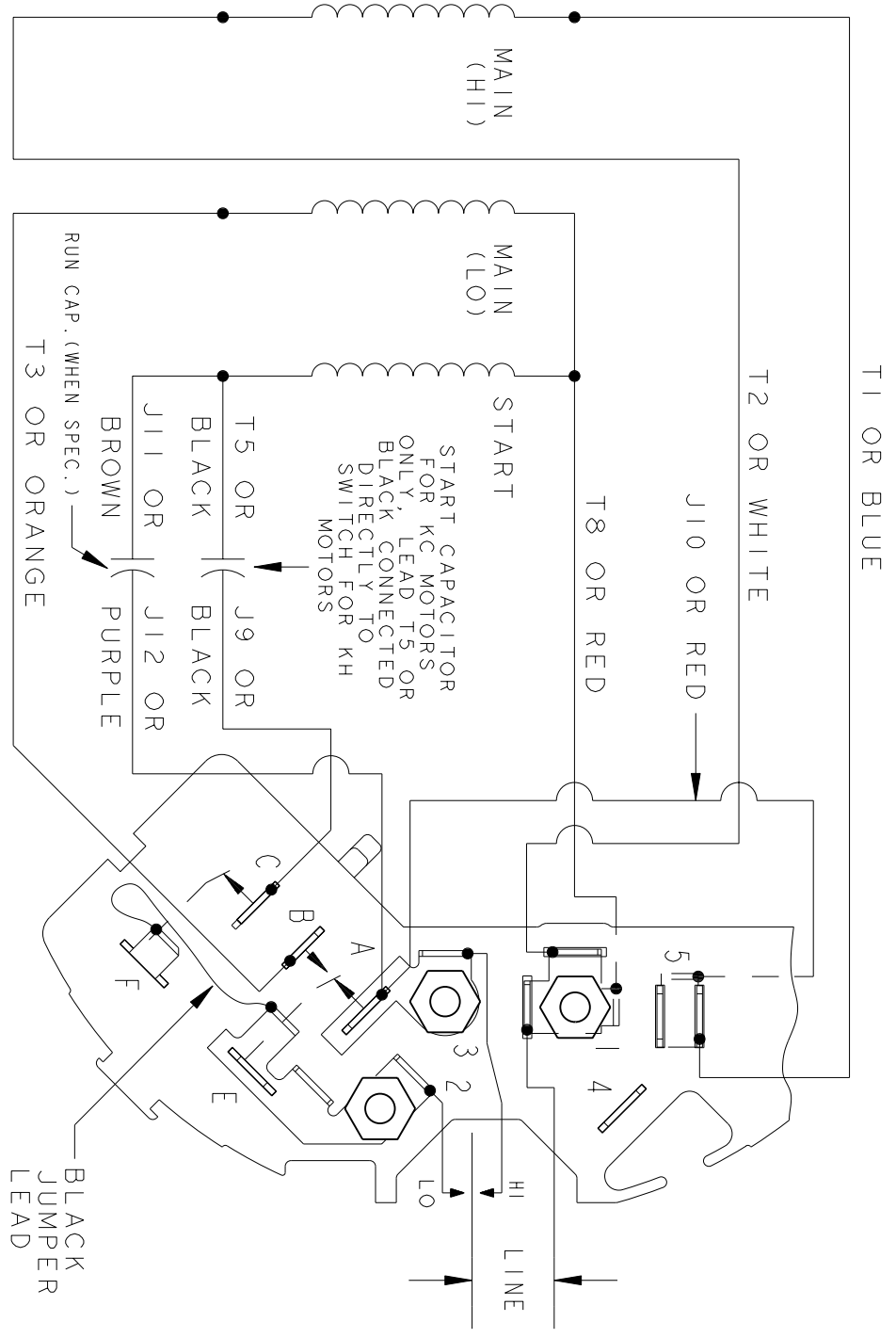


THIRD ANGLE PROJECTION

REVISIONS

REV.	DESCRIPTION	DATE	APPROVED
5	UPDATED TO RBC FORMAT	01/09/06	MAM

EITHER ROTATION  
 SINGLE VOLTAGE  
 TYPE KC, KCR, OR KH  
 2 SPEED  
 POLE CHANGING



NOTE #1 - TO REVERSE ROTATION INTERCHANGE BLUE (T1) AND WHITE (T2) LEADS.

NOTE #2 - WHEN MORE THAN ONE CAPACITOR IS USED CONNECT IN PARALLEL.

SWITCH (D) - 115D9558BA

CONNECTION LABEL - 52X332073

REF. DIAG. - 121A865

SIGNATURES	DATE
MODEL M.D.P.	12/14/87
DETAIL	
CHECKED	
ENGRG	
MFG	
QUALITY	
ISSUED M.D.P.	12/14/87
APPLIED PRACTICES	
DIMENSIONS ARE IN INCHES	
MATERIAL	SOLID MODEL: 52A106478AA



REGAL-BELOIT CORPORATION

TITLE CONNECTION DIAGRAM

FMF: 5KH36KN114G

52A106478AA

SIZE A	DRAWING	SCALE: 1.000	REF. No.:	SHEET 1 of 1
REV 5				